

*Western Iowa Advantage is a collaborative group of economic development officials in Audubon, Calhoun, Carroll, Crawford, Greene, Ida, and Sac Counties.*

## Western Iowa Networks Breaks Ground on New Carroll Retail Operations

On June 15, Western Iowa Networks, Breda, broke ground on a new retail operations facility in Carroll. This new facility will be approximately 37,000 square feet near the intersection of Market Street and Kittyhawk Avenue. The new location will house both office space and the company's garage/warehouse. The company has outgrown its current facilities and feels that combining operations into one facility will help the company be more efficient.

Western Iowa Networks has been busy within the communities they serve recently. Not only have they broke ground on a new facility, the company will be expanding their fiber optic network into the City of Auburn. The company also has recently donated to the St. Anthony Cancer Center, the Miracle Field (Carroll), the new Arcadia shelter house, and the Breda Ball Park concession stand.



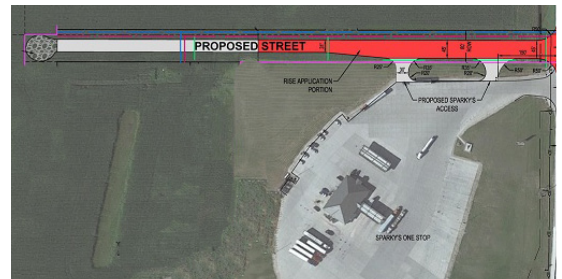
## Calhoun County and CCEDC Receive DOT RISE Grant

Calhoun County and Calhoun County Economic Development Corporation (CCEDC) have been awarded a \$261,244 Revitalize Iowa's Sound Economy (RISE) grant from the Iowa Department of Transportation (DOT) to help fund infrastructure construction to a proposed business/industrial park near Rockwell City, at the intersection of Highways 4 and 20.

According to CCEDC Executive Director, Jill Heisterkamp, the grant will be used to build approximately 750 feet of roadway to connect the proposed industrial park with existing roads. While plans are still being finalized for the 21.72 acres in this first phase of the overall park project, CCEDC is confident that infrastructure build out will begin in the near future and more details will be available at that time.

As the first business/industrial park located in Calhoun County, the project will be a significant opportunity for economic development. Studies show that the area is primed to attract warehousing and distribution businesses, support travelers, and enhance logistic support in the region.

The RISE funds are distributed to the county through reimbursements, and expenses must be submitted to the DOT as the project moves forward. Heisterkamp says some pieces still need to fall into place before they can get started, but is optimistic construction on the new road will finish by 2021.



Above: The location of the RISE grant project is shown in red. The \$261,244 grant award will build approximately 750 feet of roadway. The project is located just north of Sparky's at the intersection of Highways 4 and 20

## FEATURED BUILDING: 2004 N MULBERRY ST., JEFFERSON

This building features 16,800 square feet of flex space. The office space has 5-6 cubical areas, IT and print and storage area. There is a team/training room with 3 workstations, locker room area and storage. The warehouse/shop area has 2, 18' overhead doors and a wash bay area. More information can be found by clicking [HERE](#), or by contacting Ken Paxton.

### Contact:

Ken Paxton, Greene County Development Corporation

Email: [ken@greencountyiowa.com](mailto:ken@greencountyiowa.com)

Phone: 319-541-4146



---

## Renewable energy comprised 61.3% of the electricity MidAmerican Energy delivered to Iowa customers in 2019

*Company led nation in new wind generation in 2019*

DES MOINES, Iowa – (May 12, 2020) – Renewable sources, mostly through wind energy, supplied 61.3% of the energy that MidAmerican Energy delivered to its Iowa customers last year, the Iowa Utilities Board verified in an order issued Thursday. The measure is a 19%, or 10 percentage point, gain from a year earlier. It reflects the amount of renewable generation, as a percent of total retail energy delivered, that MidAmerican provided to its customers in Iowa in 2019. In 2018 the percentage was 51.4. “We’re making significant inroads in our quest to provide 100% renewable energy annually to our customers,” Adam Wright, MidAmerican Energy president and CEO, said. “We continue to work hard every day on expanding our wind energy infrastructure,” Wright added. “We’re adding wind generation at no net cost to our customers while still providing reliable energy at some of the lowest rates in the country.”

### MidAmerican leads nation in new wind generation

Last year, MidAmerican led the nation in wind project installations by adding more than a 1,000 megawatts of new capacity, according to the American Wind Energy Association. AWEA further reports that MidAmerican’s wind farms helped make wind energy the number one source of electricity generation in Iowa in 2019. Also last year, MidAmerican helped Iowa lead the nation in the percent of electricity generated by wind energy. “Despite all that has changed this year, what hasn’t changed is our commitment to providing our customers with more and more renewable energy,” Wright said. “We remain focused on safely delivering clean energy to our customers.”

### GreenAdvantage program

MidAmerican Energy’s GreenAdvantage program, which the company provides to all Iowa customers at no additional cost, assures all customers across the state that a significant part of their electricity comes from renewable energy – 61.3% in 2019. The

program enables businesses to claim the verified percentage of energy they received, which helps companies meet sustainability goals. Wind energy is a zero-carbon and zero-water electricity source.

### Economic benefits

In addition to providing clean energy at no net cost to its customers, MidAmerican’s wind energy provides significant economic benefits, particularly to rural Iowa. Through last year, MidAmerican has cumulatively invested \$11.9 billion in wind energy. In 2019, the company paid \$26.3 million in property taxes. County property taxes help pay for schools, roads and bridges, and county medical services. Additionally, MidAmerican paid rural landowners \$30.9 million through lease payments, helping these landowners weather this year’s extreme economic volatility.

### Wind turbine technician: 2nd fastest-growing job

MidAmerican’s wind energy projects currently employ hundreds of people across the state, both in short-term construction and long-term operations and maintenance jobs. According to the U.S. Bureau of Labor Statistics, a wind turbine technician is the country’s second fastest-growing job in the nation. Additionally, according to the agency, those technicians earned an annual mean wage of \$57,510 in Iowa in 2019, exceeding the median wage for all occupations in Iowa last year, which was \$47,330.

### About MidAmerican Energy Company

MidAmerican Energy Company, headquartered in Des Moines, Iowa, serves more than 791,000 electric customers in Iowa, Illinois and South Dakota, and 771,000 natural gas customers in Iowa, Illinois, Nebraska and South Dakota. Information about MidAmerican Energy is available at [MidAmericanEnergy.com](http://MidAmericanEnergy.com) and company social media channels.

## Both the WIAD Region & the State of Iowa See Unemployment Rate Increases

The Western Iowa Advantage Region's monthly unemployment rate (not seasonally adjusted) rose from 2.2 percent in May 2019 to 7.1 percent in May 2020, according to figures released from Iowa Workforce Development. Iowa's unemployment rate was 9.7 percent in May 2020 up from 2.4 percent in May 2019. The U.S. unemployment rate was 13.3 percent in May 2020. Total employment in the region fell from 40,680 in May 2019 to 37,650 in May 2020.

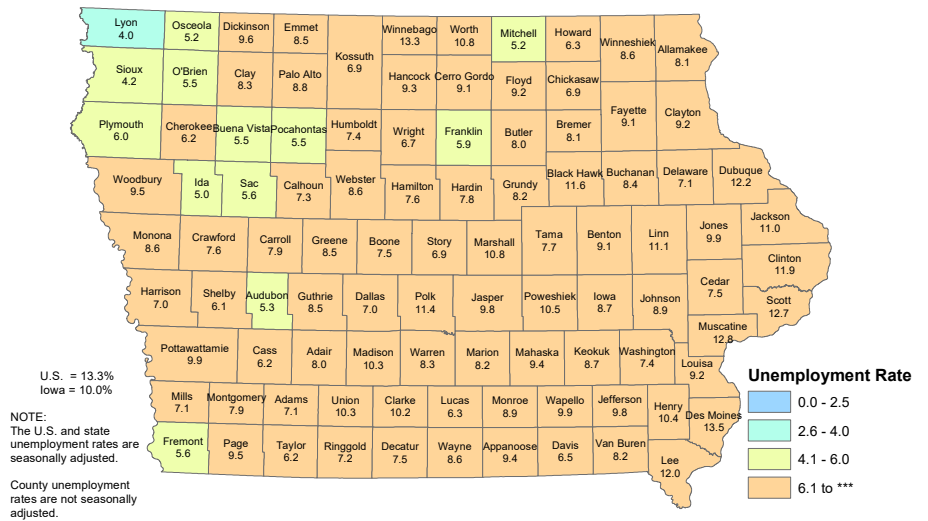
### Iowa Unemployment Rates by County

May 2020

Western Iowa Advantage tracks various economic indicators in Audubon, Calhoun, Carroll, Crawford, Greene, Ida, and Sac Counties in Iowa, including employment trends.

County unemployment rates in the region for May 2020:

- Audubon 5.3%
- Calhoun 7.3%
- Carroll 7.9%
- Crawford 7.6%
- Greene 8.5%
- Ida 5.0%
- Sac 5.6%



## WIAD PARTNERS:

**Evan Blakley**, Executive Director, Chamber & Development Council of Crawford County  
eblakley@cdcia.org ■ (712) 263-4789 ■ www.cdcia.org

**Rita Frahm**, Executive Director, Ida County Economic Development  
rmfracm@gmail.com ■ (712) 364-3181 ■ www.idacounty.org

**Jill Heisterkamp**, Executive Director, Calhoun County Economic Development Corporation  
ccedc@calhouncountyiowa.com ■ (712) 297-5601 ■ www.calhouncountyiowa.com

**Rick Hunsaker**, Executive Director, Region XII Council of Governments/Region XII Development Corp.  
rhunsaker@region12cog.org ■ (712) 775-7800 ■ www.region12cog.org

**Shannon Landauer**, CEcD, Executive Director, Carroll Area Development Corporation  
s.landauer@carrolliowa.com ■ (712) 792-4383 ■ www.carrollareadev.com

**Ken Paxton**, Executive Director, Greene County Development Corporation  
ken@greenecountyiowa.com ■ (515) 386-8255 ■ www.greenecountyiowa.org

**Brandy Ripley**, Executive Director, Sac Economic & Tourism Development  
bripley@sacountyiowa.com ■ (712) 664-2940 ■ www.sacountyiowa.com

**Sara Slater**, Business & Tourism Coordinator, Audubon County Economic Development Corporation  
aced@windstream.net ■ (712) 563-2742 ■ www.auduboncounty.com

**Chris Whitaker**, Local Assistance Director, Region XII Council of Governments/Region XII Development Corp.  
cwhitaker@region12cog.org ■ (712) 775-7811 ■ www.region12cog.org