

Western Iowa Advantage is a collaborative group of economic development officials in Audubon, Calhoun, Carroll, Crawford, Greene, Ida, and Sac Counties.

Western Iowa Advantage Annual Dinner

October 6, 2021

Audubon Recreation Center
703 Southside Avenue, Audubon

6:00 pm
Social



6:30 pm
Dinner



7:00 pm
Program



Guest Speaker: Jason Hutcheson, *Develop This! Podcast*

Momentum is always at work in your community. Are the forces of momentum moving your community forward or are they weighing you down? Jason Hutcheson, host of Develop This! Podcast, will share an inspirational message about the future of rural Iowa communities. By mixing a bit of humor with practical strategies deployed by other Iowa towns, Jason has a unique way of unveiling the fundamentals of economic and community development necessary for the future.

Jason Hutcheson has served the economic development industry for over 15 years in a variety of capacities. As President/CEO of the Greater Burlington Partnership, he oversaw the efforts of the chamber of commerce, economic development group, tourism bureau, Main Street organization, and the Community Foundation of Des Moines County. He has served as the President of the Professional Developers of Iowa and the Iowa Chamber Alliance and is considered a thought leader on incentives, land use, and fundraising. He is the host of Develop This! Podcast which boasts over 350 episodes and is ranked #1 in economic and community development on iTunes.

**Join others from throughout the WIAD region to hear about recent activities,
network with peers, and hear our featured speaker.**

RSVP by October 1, 2021 by **Clicking HERE**

or by contacting JoAnn Olberding at 712-792-9914 or jolberding@region12cog.org

CITY OF LAKE VIEW APPROVES INCENTIVES FOR EVAPCO EXPANSION

The Lake View City Council approved a resolution which lays the groundwork for economic development incentives for Evapco's planned expansion. Evapco is investing approximately \$12.5 million for the project: \$9.5 million for construction costs and \$3 million in equipment purchases. These funds will be utilized to construct a 60,000 sq. ft. building on the current building site. The addition to the community's property tax base is substantial in its own right, but the company is also preparing for a notable increase in available jobs. The expansion is anticipated to lead to the hiring of an additional 83 employees in the next five to ten years.

The City of Lake View is assisting the company with getting the expansion up and running as quickly as possible. The city will install an approximately one mile-long, 12-inch water main to the new plant to account for the increased water usage at the site. Cost estimates to install the water main are approximated to be around \$568,000 which will be paid for utilizing tax increment financing funds. The City of Lake View is offering additional incentives to Evapco for the expansion, but the final details of those additional incentives have not yet been finalized.

Other outside funding is also being sought in addition to incentives from the city. The High Quality Jobs program through the Iowa Economic Development Authority is also being pursued for assistance. To be eligible for this program, jobs must pay at least 100 percent of the qualifying wage threshold and provide sufficient employee benefits, including health insurance. The expansion project broke ground on July 20, 2021 and the facility is anticipated to be ready in mid to late summer, 2022.

PUCK BREAKS GROUND ON NEW 100,000-SQUARE-FOOT EXPANSION PROJECT

Puck Enterprises recently broke ground for construction of a 100,000 square-foot building on their main campus in Manning, Iowa. This expansion will allow the company to enhance their production capabilities. This building, once completed, will usher in the next chapter for the industry-leading liquid transfer equipment manufacturer.

The 100,000 square-foot building will serve a number of different manufacturing functions. There will be an automated powder coating line, allowing the company to have greater throughput. Puck plans on adding twice as many welding bays as they currently have, and tripling the assembly space.

This new building will connect the current manufacturing line to the central warehouse. The location of this expansion will also bring the product closer to the facility where all of the finished product is stored.

Puck has been expanding its campus' footprint in Manning, Iowa, since 2010. Today, in addition to the ever-growing headquarters, the company has satellite locations in Farley, Iowa; Worthing, South Dakota; and Osijek, Croatia.

To improve access to this new building, Audubon County was awarded \$261,653 in RISE Grant funding from the Iowa Department of Transportation. These RISE funds will be utilized to improve access on 100th Street and M66 to Puck Enterprises and assist in the facility expansion.

For more information about Puck, visit Puck.com.



Iowa Manufacturing Day - October 1

Manufacturing Day is a celebration of modern manufacturing meant to inspire the next generation of innovators and makers. While national Manufacturing Day is officially the first day of each October, companies and community organizations can plan events for any date that works best for them.

Iowa Manufacturing Day events are a great first step in inspiring the next generation of employees for a business.

FEATURED LOTS: CALHOUN COUNTY BUSINESS PARK

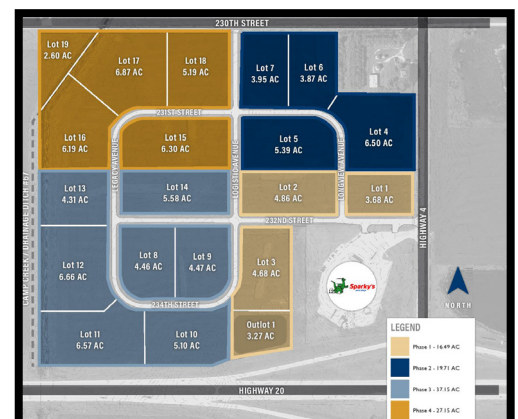
Calhoun County Business Park is a new 115-acre business park located at the intersection of U.S. Highway 20 and IA Highway 4, just north of Rockwell City, Iowa. Four-lane U.S. Highway 20 provides a direct and easy 56-mile drive to Interstate 35 and 90-mile drive to Interstate 29. The dedicated highway interchange near the Park makes it an ideal location for warehousing, distribution, cold storage, and other logistic service providers. Calhoun County Business Park is located in a Federally-designated Opportunity Zone and is locally designated as an urban renewal area, offering potential financial incentives for development. A flyer with more information can be found [HERE](#).

Contact:

Riley Blead, Executive Director, Calhoun County Economic Development

Email: ccedc@calhouncountyiowa.com

Phone: (712) 297-5601



Calhoun County Business Park Groundbreaking

Calhoun County's first business park begins construction near four-lane U.S. Highway 20

ROCKWELL CITY, IA (June 4, 2021) – A groundbreaking ceremony took place on Thursday, June 3, 2021, to commemorate the beginning of construction on a new 115-acre business park being developed at the intersection of four-lane U.S. Highway 20 and Highway 4, just north of Rockwell City. This is the first business park to be located in Calhoun County, and it is one of the first to be built along rural Highway 20 since the four-lane highway expansion project was completed in 2018.

The Calhoun County Business Park project is spearheaded by a development team including the Calhoun County Board of Supervisors, Calhoun County Economic Development Corp. (CCEDC), Calhoun County Electric Cooperative Association (CCECA), and Corn Belt Power. The engineering firm ISG, City of Rockwell City, and Twin Lakes Utilities were also involved in the project.

"The Calhoun County Business Park project was only made possible through the diligent efforts of numerous organizations working together toward a common goal," said Jill Heisterkamp, former Executive Director at CCEDC. "We are excited to see opportunities develop at the site and for this project's success to influence future development throughout Calhoun County."

The groundbreaking marks the beginning of Phase 1 of the Business Park's planned four-phase development. Phase 1 offers 16.49 developable acres and includes construction of a new dedicated road entrance to the Business Park, drainage and stormwater detention, and water and sewer infrastructure access for three buildable lots.

Since the completion of the four-lane U.S. Hwy 20 project in late 2018, traffic counts have increased significantly, with the first quarter of 2021 showing an average daily traffic count of 5,820 vehicles traveling through the Highway 20 and 4 intersection.

"With its location at an interchange for new four-lane Highway 20 and its proximity to Interstates 35 and 29, the Calhoun County Business Park is a great location for warehousing, distribution, cold storage, and other logistic service providers," said Heisterkamp. "A Sparky's One Stop truck stop and convenience store already exists at the site, located on the southeast side of the property, which further supports businesses in these industries locating here."

Calhoun County Business Park is located in a Federally-designated Opportunity Zone and will be locally designated as an urban renewal area, offering potential financial incentives for development. The marketing flyer for the business park can be found by clicking [HERE](#). More information about the Business Park can be found at www.ccedciowa.com/businesspark, or by contacting CCEDC at 712-297-5601 or ccedc@calhouncountyiowa.com.



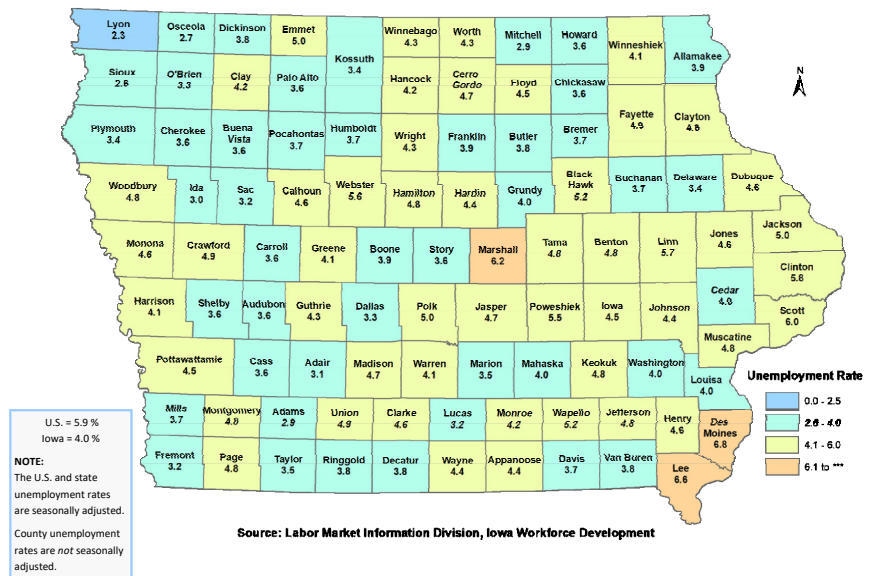
Photo identification (L-R): Rand Fisher, President, Iowa Area Development Group; Brittany Dickey, Development Finance Director, Corn Belt Power Cooperative; Jim Vermeer, Vice President of Business Development, Corn Belt Power Cooperative; Brooke Sievers, Civil Engineer, ISG; Scott Jacobs, Calhoun County Board of Supervisors; Keaton Hildreth, CEO, Calhoun County Electric Cooperative Association; Jill Heisterkamp, Former Executive Director, Calhoun County Economic Development Corp.; Debi Durham, Executive Director, Iowa Economic Development Authority; and Nick Buse, Calhoun County Engineer.



Both the WIAD Region & the State of Iowa See Unemployment Rate Decreases in June

The Western Iowa Advantage Region's monthly unemployment rate (not seasonally adjusted) fell from 5.5 percent in June 2020 to 3.9 percent in June 2021, according to figures released from Iowa Workforce Development. Iowa's unemployment rate was 4.6 percent in June 2021 down from 7.3 percent in June 2020. The U.S. unemployment rate was 5.9 percent in June 2021. Total employment in the region rose from 37,680 in June 2020 to 38,760 in June 2021.

Iowa Unemployment Rates by County June 2021



Audubon 3.6%
Calhoun 4.6%
Carroll 3.6%
Crawford 4.9%
Greene 4.1%
Ida 3.0%
Sac 3.2%

WIAD PARTNERS:

Evan Blakley, Executive Director, Chamber & Development Council of Crawford County
eblakley@cdcia.org ■ (712) 263-4789 ■ www.cdcia.org

Rita Frahm, Executive Director, Ida County Economic Development
rmfracm@gmail.com ■ (712) 364-3181 ■ www.idacounty.org

Riley Bleam, Executive Director, Calhoun County Economic Development Corporation
cccdc@calhouncountyiowa.com ■ (712) 297-5601 ■ www.calhouncountyiowa.com

Rick Hunsaker, Executive Director, Region XII Council of Governments/Region XII Development Corp.
rhunsaker@region12cog.org ■ (712) 775-7800 ■ www.region12cog.org

Matt Meiners, Economic Vitality Director, Carroll Area Development Corporation
m.meiners@carrolliowa.com ■ (712) 792-4383 ■ www.carrollareadev.com

Ken Paxton, Executive Director, Greene County Development Corporation
ken@greencountyiowa.com ■ (515) 386-8255 ■ www.greencountyiowa.org

Brandy Ripley, Executive Director, Sac Economic & Tourism Development
bripley@sacountyiowa.com ■ (712) 664-2940 ■ www.sacountyiowa.com

Sara Slater, Business & Tourism Coordinator, Audubon County Economic Development Corporation
aced@windstream.net ■ (712) 563-2742 ■ www.auduboncounty.com

Chris Whitaker, Local Assistance Director, Region XII Council of Governments/Region XII Development Corp.
cwhitaker@region12cog.org ■ (712) 775-7811 ■ www.region12cog.org