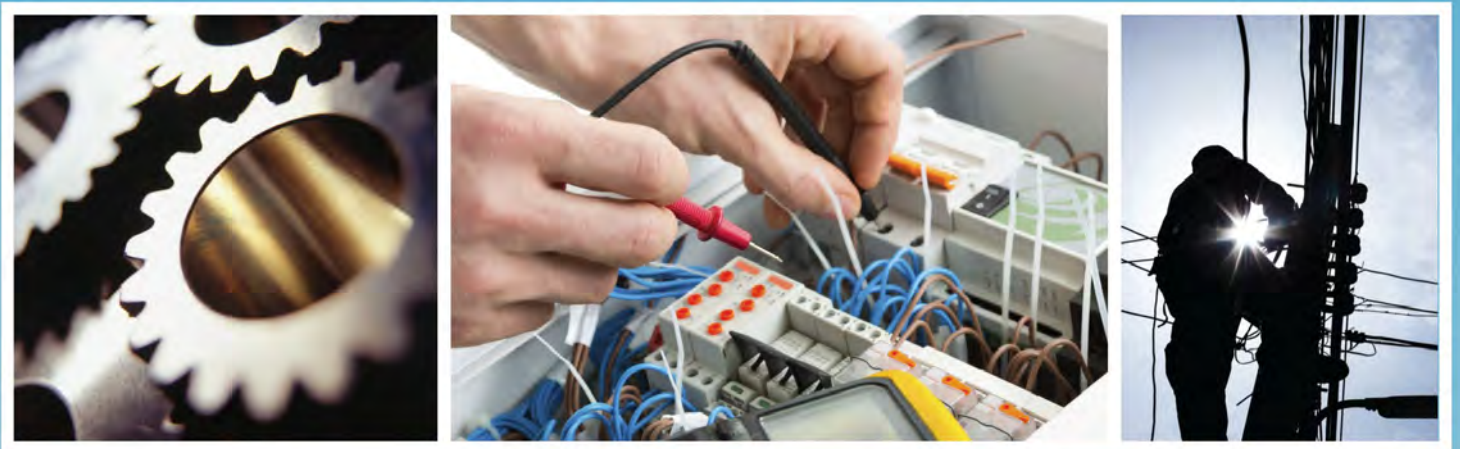


2016 laborshed analysis crawford county, iowa

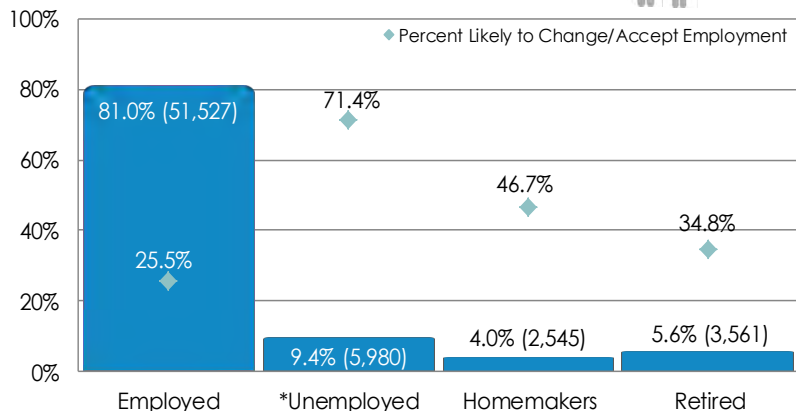


a study of workforce characteristics

CRAWFORD COUNTY LABORSHED ANALYSIS

A Laborshed is the area or region from which an employment center draws its commuting workers. To determine the approximate boundaries of a Laborshed area, local employers supply the residential ZIP codes of each of their employees. This Laborshed analysis addresses the workforce characteristics of the Crawford County Laborshed area.

EMPLOYMENT STATUS (ESTIMATED TOTAL)*



*Employment status is self-identified by the survey respondent. The unemployment percentage above does not reflect the unemployment rate published by the U.S. Bureau of Labor Statistics, which applies a stricter definition.

EMPLOYED - LIKELY TO CHANGE EMPLOYMENT

- Median wages: \$15.00/hr & \$65,000/yr
- 26.6% are actively seeking new employment
- 18.3% are working multiple jobs
- Currently working an average of 44 hrs/week
- 38.0% currently working within the production, construction & material handling occupational category followed by 28.2% within the professional, paraprofessional & technical occupational category
- Most frequently identified job search resources:

www.indeed.com
www.monster.com

Internet,
51.3%

Denison Bulletin Review
Daily Times Herald - Carroll
Harlan Tribune

Newspapers,
36.8%

IowaWORKS
Centers,
28.9%

Networking,
19.7%



Estimated Population 18-64: 63,613 (entire Laborshed area)

Estimated Number of Individuals Very Likely or Somewhat Likely to Change or Accept Employment in Denison (16,452):

- 13,633 Employed
- 1,289 Unemployed
- 840 Homemakers
- 690 Retired

UNDEREMPLOYMENT



	Underemployment	
	% Underemployed	Estimated Underemployed
Inadequate Hours	1.5%	204
Mismatch of Skills	2.2%	300
Low Income	0.2%	27
†Total Underemployment	3.2%	436

† Individuals may be underemployed for more than one reason, but are counted only once for total estimated underemployment.

The underemployed are individuals who are working fewer than 35 hours per week but desire more hours; are working in positions that do not meet their skill or education level, or have worked for higher wages at previous employment; or are working at wages equal to or less than the national poverty level and work 35 or more hours per week.

EMPLOYMENT LEVELS AND STATUS BY INDUSTRY



Industry	Industry % of Employed	Estimated # of Employed	% Employed within the Industry	% Likely to Change Employment	% Unemployed* within the Industry
Healthcare & Social Services	15.7%	8,090	75.0%	28.0%	10.3%
Wholesale & Retail Trade	14.1%	7,265	74.2%	26.7%	12.9%
Education	12.9%	6,647	87.5%	15.0%	4.2%
Manufacturing	12.6%	6,492	77.4%	46.3%	15.1%
Agriculture, Forestry & Mining	8.9%	4,586	93.5%	3.4%	6.5%
Public Administration & Government	8.9%	4,586	85.3%	28.6%	2.9%
Transportation, Communication & Utilities	8.3%	4,277	93.1%	19.2%	6.9%
Personal Services	7.4%	3,813	92.3%	25.0%	3.8%
Construction	4.3%	2,216	82.4%	42.9%	17.6%
Finance, Insurance & Real Estate	3.7%	1,906	85.7%	0.0%	0.0%
Professional Services	3.2%	1,649	76.9%	40.0%	0.0%

Survey respondents from the Crawford County Laborshed area were asked to identify the industry in which they are currently working. The largest concentration of workers are employed in the healthcare & social services industry.

COMMUTING STATISTICS



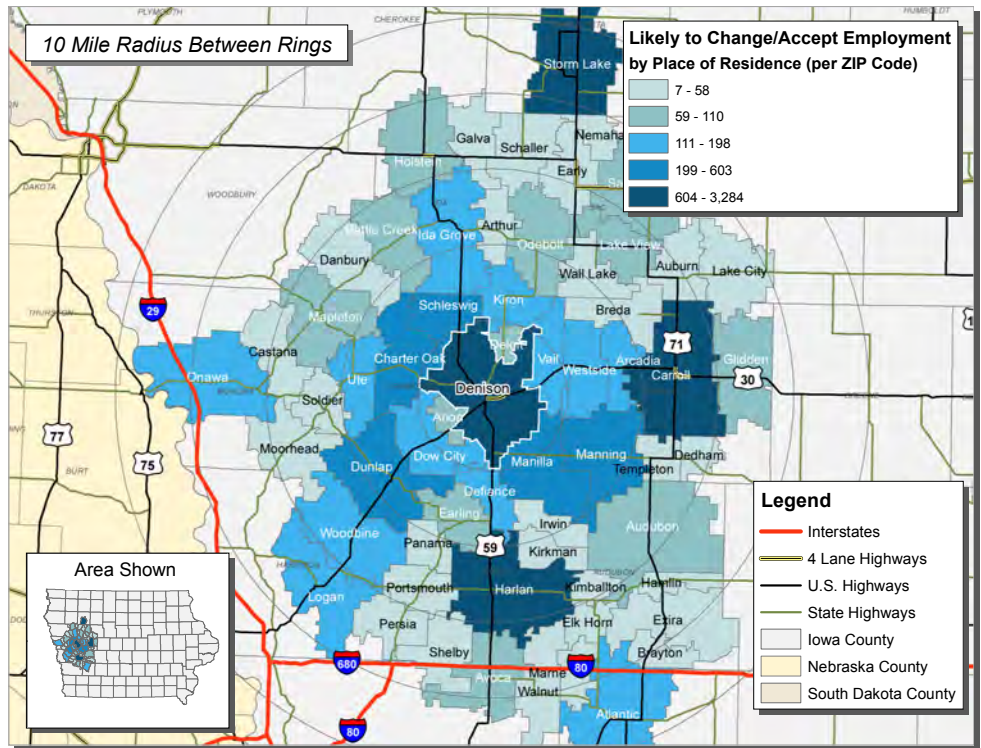
The map at the right represents the concentration of those who are likely to commute into Denison from their home ZIP for an employment opportunity.

Those who are likely to change/accept employment in the Crawford County Laborshed area are willing to commute an average of 22 miles one-way for employment opportunities.

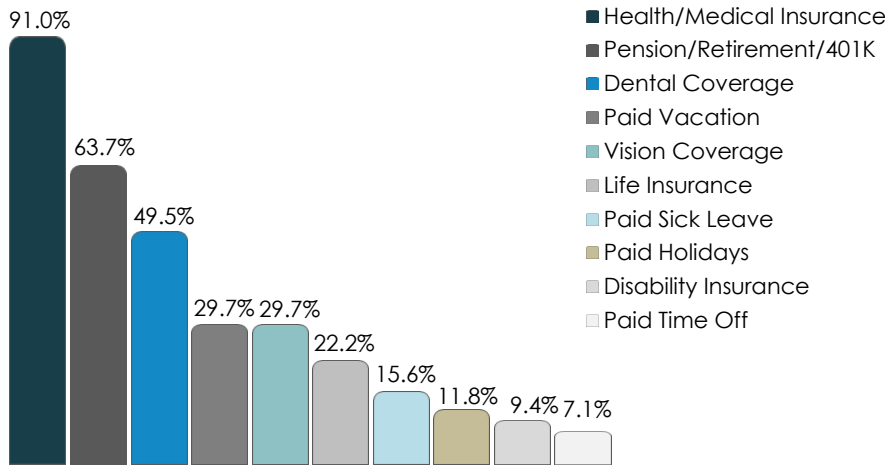
The out commute for Denison is estimated at 6.5 percent—approximately 259 people living in Denison work in other communities.

Half (50.0%) of out commuters are likely to change employment (approximately 130 people).

CONCENTRATION OF THOSE LIKELY TO CHANGE/ACCEPT EMPLOYMENT IN DENISON



TOP CURRENT BENEFITS OF THE FULL-TIME EMPLOYED



The survey provides the respondents an opportunity to identify employment benefits they currently are offered. The chart at left provides the percentage of responses from those that are currently employed full-time.

The majority (70.1%) of these respondents state they are currently sharing the cost of health/medical insurance premiums with their employer. However, 17.5 percent indicate their employer pays the entire cost of insurance premiums.

EDUCATION LEVELS AND MEDIAN WAGES BY INDUSTRY

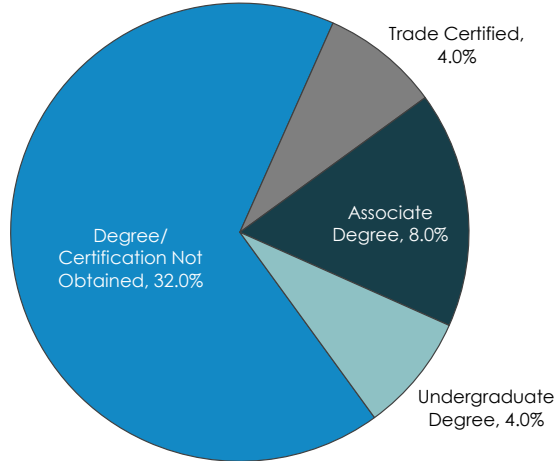


	Education			Median Wages	
	Some Level Beyond High School	Associate Degree	Undergraduate Degree or Higher	Annual Salary	Hourly Wage
All Employed	70.2%	18.5%	25.8%	\$58,000	\$15.13
Agriculture, Forestry & Mining	64.5%	12.9%	16.1%	\$40,000	\$12.00
Construction	41.2%	11.8%	5.9%	**	\$23.05
Education	85.1%	12.8%	59.6%	\$58,000	\$13.15
Entertainment & Recreation	**	**	**	**	**
Finance, Insurance & Real Estate	85.7%	21.4%	35.6%	\$55,000	\$13.38
Healthcare & Social Services	76.1%	17.9%	19.5%	\$64,000	\$15.30
Manufacturing	54.7%	15.1%	15.1%	**	\$16.32
Personal Services	65.4%	19.2%	30.7%	\$47,500	\$11.00
Professional Services	69.2%	15.4%	38.5%	\$90,000	\$10.25
Public Administration & Government	88.2%	41.2%	23.5%	\$61,500	\$22.30
Transportation, Communication & Utilities	62.1%	17.2%	10.3%	\$75,000	\$23.00
Wholesale & Retail Trade	59.0%	11.5%	14.7%	**	\$11.75

The education and wage data by industry within the above table includes all respondents without consideration of employment status or willingness to change/enter employment.
 **Insufficient survey data/refused

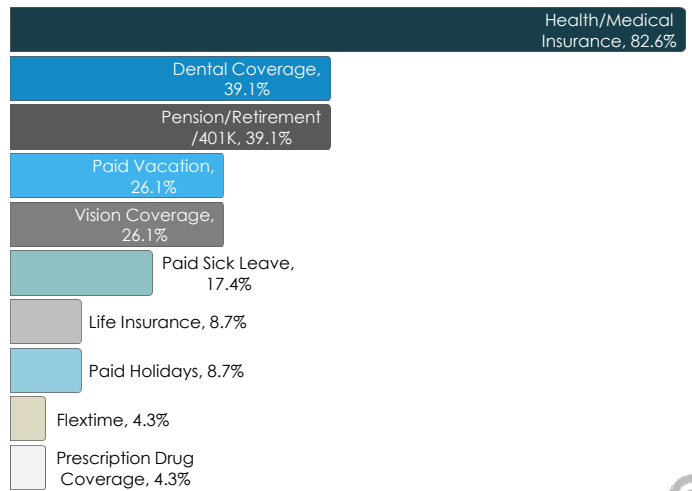
UNEMPLOYED - LIKELY TO ACCEPT EMPLOYMENT

- 60.0% are actively seeking employment
- An estimated 1,289 unemployed individuals are likely to accept employment in Denison.
- Average age is 42 years old
- 52.0% are male; 48.0% are female
- **Education:**
 - 48.0% are educated beyond high school

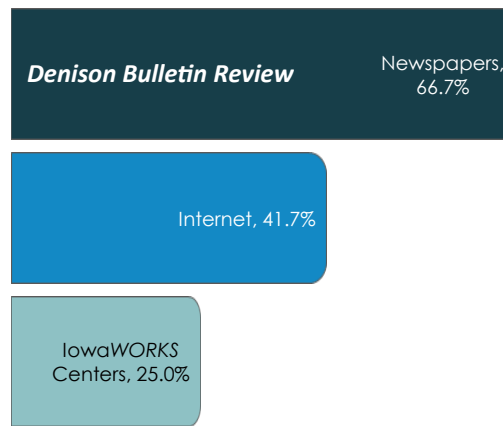


- **Wages:**
 - \$12.84/hr - to attract 66% of applicants
 - \$13.00/hr - to attract 75% of applicants
 - \$11.00/hr - lowest median wage willing to accept
- Willing to commute an average of 20 miles one way for the right opportunity
- 76.0% expressed interest in seasonal and 64.0% in temporary employment opportunities
- 36.0% expressed interest in working varied shifts

DESIRED BENEFITS



TOP UNEMPLOYED JOB SEARCH RESOURCES



SPONSORED IN PARTNERSHIP WITH:



FOR MORE INFORMATION REGARDING THE CRAWFORD COUNTY LABORSHED ANALYSIS, CONTACT:

Evan Blakley
Chamber and Development Council of Crawford County
 18 South Main Street
 Denison, Iowa 51442
 Phone: 712-263-5621 / 712-263-6622
 Fax: 712-263-4789
 Email: eblakely@cdcia.org
 www.cdcia.org



Data compiled and analyzed by:
 Iowa Workforce Development
 Labor Market Information Division
 1000 E. Grand Avenue, Des Moines, Iowa 50319
 Phone: (515) 281-7505 | Email: laborshed.studies@iwd.iowa.gov
 www.iowalmi.gov