

Greene County Development Site - Phase 2

Available Acres: 23

Address:

1609 N Elm
Jefferson, IA 50129 (Greene)

Property and Area Description:

ZONED COMMERCIAL & LIGHT INDUSTRIAL
Located along Hwy 30 in the industrial park.

- Will Divide Lots
- Build to Suit
- Rail Access
- Adequate Water & Sewer
- High Speed Internet Available

Site Details:

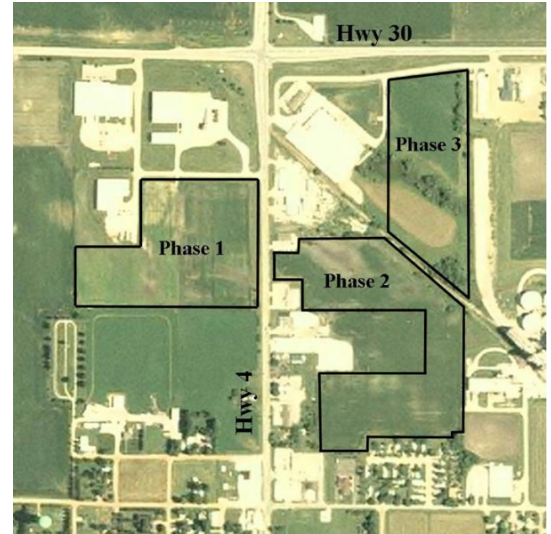
Available Acres: 23	Adjacent Avail. Acres: 20
Topography: Level	Setting: Industrial Park
Zoning: Industrial-Light	Within City Limits: Yes

Transportation:

Nearest Interstate: Interstate 35	Distance (miles): 37
Nearest 4-Lane Highway: Highway 30	Distance (miles): 19
Nearest Commercial Airport: Des Moines International Airport	Distance (miles): 66
Rail Served: Yes	

Utilities:

Electric Distribution: Alliant Energy
Natural Gas Distribution: Alliant Energy
Water: City of Jefferson
Sewer: City of Jefferson
Local Telecommunications Service: Jefferson Telephone Company



Contact:

Ken Paxton
Greene County Development Corporation
220 N. Chestnut
Jefferson, IA 50129
Phone: 515-386-8255
Fax: 515-386-2156
E-Mail: ken@greencountyiowa.com
Web site: www.greencountyiowa.com

Sarah Gomez
Midwest Partnership
615 S. Division St.; P.O. Box 537
Stuart, IA 50250
Phone: 515-523-1262
Fax: 515-523-1397
E-Mail: sgomez@midwestpartnership.com
Web site: www.midwestpartnership.com

Offering:

Sale Price: \$30,000/acre